

## The Task Force on Global Advantage

### Commissioners



#### **KESETEBIRHAN ADMASU**

Dr. Kesete Admasu served as Minister of Health of the Federal Democratic Republic of Ethiopia from 2012 to 2016. Dr. Kesete has dedicated his career to public service and scientific research focused on major public health problems in Ethiopia and has received numerous national and international awards.

A medical doctor by training with a Masters degree in public health, Dr. Kesete has served in a number of clinical and public health positions. He has worked as a public private partnership team leader, the CEO of a tertiary hospital and the Director General of health promotion and disease prevention before assuming his current position as CEO of the Roll Back Malaria Partnership.



#### **AGNES BINAGWAHO**

Dr. Agnes Binagwaho is a Rwandan pediatrician who served as the Minister of Health of Rwanda for 5 years, from May 2011 until July 2016. After practicing as a pediatrician for over 15 years, Dr. Binagwaho led the National AIDS Control Commission between 2002 and 2008. She then served as Permanent Secretary in the Ministry of Health from 2008 until 2011. Dr. Binagwaho serves on many academic boards academic. Her engagements include research on health equity, HIV/AIDS, information and communication technologies (ICT) in e-health, and pediatric care delivery systems. She has published over 100 peer-reviewed articles, serves on the International Advisory Board of Lancet Global Health, the Editorial Board of PLoS Medicine and of Health and Human Rights: An International Journal, and contributed to multiple books. She chairs the Rwanda Pediatric Society, is a member of the Global Task Force on Expanded Access to Cancer Care and Control in Developing Countries. Dr. Binagwaho is currently a Senior Lecturer in the Department of Global Health and Social Medicine at Harvard Medical School, a Clinical Professor of Pediatrics at the Geisel School of Medicine at Dartmouth College, and a Professor of the Practice of Global Health Delivery at the University of Global Health Equity in Rwanda. She also serves on the International Strategic Advisory Board for the Institute of Global Health Innovation at Imperial College London. Dr. Binagwaho received an Honorary Doctor of Science degree from Dartmouth College in 2010. In 2014, she received her Ph.D. from the University of Rwanda. She is active in advocacy and political mobilisation on behalf of women and children, in Rwanda and worldwide.



### **JOSÉ LUIS CASTRO**

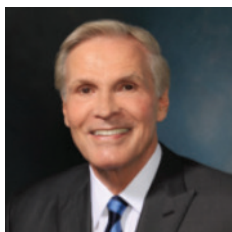
José Luis Castro serves as Executive Director of The International Union Against Tuberculosis and Lung Disease and President and CEO of Vital Strategies.

With 27 years of experience in public health management, Mr. Castro has lead strategy and operations for both organizations, building today's worldwide network of country offices, experts and programs that now serve more than 100 countries.

As Executive Director of The Union, José Luis Castro strengthened the organization's financial base, internal and external communications operations, and human resources functions. When he joined The Union in 2001, Mr. Castro quickly established himself as a leader in the international effort to improve tuberculosis control programs by launching the International Management Development Program (IMDP) to provide training in management, budgeting and logistics competencies to more than 4,000 people from 30 countries.

Mr. Castro currently serves as Chair of the NCD Alliance, a network of over 2,000 civil society organizations in more than 170 countries dedicated to combating the global Non-Communicable Disease epidemic. He also serves on several boards, including the editorial board of Journal of Health Management and is Vice President for Finance and Internal Control on the board of the International Union for Health Promotion and Education.

Before joining The Union, Mr. Castro advised WHO and the Government of India on the implementation of the Revised National TB Control Program and served as Director of Operations for New York City's Bureau of TB Control during the 1990s MDR-TB crisis. The program he helped build is still used for tuberculosis control in New York City. Castro holds a Masters of Public Administration from the University of Pennsylvania and was awarded an honorary doctorate from Pace University in 2005.



### **RAY CHAMBERS**

Ray Chambers serves as the UN Secretary-General's Special Envoy for Health in Agenda 2030 and for Malaria. In these two positions, Mr. Chambers is tasked with leveraging his business expertise to catalyze efforts and commitments required for the successful implementation of the health-related goals in Agenda 2030—which includes ending the epidemics of AIDS, TB, and malaria. In addition, Mr. Chambers co-chairs The End Malaria Council, alongside Bill Gates.

In February 2008, the Secretary-General of the United Nations appointed Mr. Chambers as his first Special Envoy for Malaria. During his tenure, visibility, awareness, and funding for malaria each increased exponentially, contributing to the distribution of over 1 billion life-saving mosquito nets to sub-Saharan Africa and averting over 6 million malaria-related deaths, most of which were children under 5 years of age.

In February 2013 the Secretary-General expanded Mr. Chambers' mandate as his first Special Envoy for Financing the Health Millennium Development Goals – the internationally agreed set of humanitarian targets. Mr. Chambers worked with key funding partners—including governments, financial institutions and the private sector—to secure adequate resources to provide the essential supplies, delivery mechanisms, systems support and measurement tools needed to attain the health MDGs.

Mr. Chambers has been a full-time philanthropist for nearly 30 years. His philanthropic efforts are diverse, with major focus areas in global health, mentoring, and revitalizing his home city of Newark, New Jersey. Among the organizations Mr. Chambers founded are the Points of Light Foundation (Founding Chairman), the America's Promise Alliance (co-founded with Colin Powell), the National Mentoring Partnership, and Malaria No More (co-founded with Peter Chernin).

In his business career, Mr. Chambers was Chairman of Wesray Capital Corporation, which he co-founded with Former Secretary of the Treasury, Mr. William E. Simon.



#### **PEGGY CLARK**

Peggy Clark is the Vice President of Policy Programs, Executive Director of Aspen Global Health and Development, and Director of the Alliance for Artisan Enterprise. Peggy has had a 30 year career working on issues of poverty alleviation, global health, social enterprise and development finance. Serving in founding and leadership roles at the Aspen Institute, the Ford Foundation, Save the Children, Realizing Rights, and on numerous boards, Peggy has been a leading figure in identifying and building industries, movements, and creative advocacy on key issues of our times. Currently, Peggy provides strategic oversight and guidance to the Institute's 30 policy programs and directs programs promoting breakthrough solutions to global development including artisan enterprise, reproductive health, new voices leadership development, health workforce sustainability, diaspora investing, and food security. Previously, Peggy served as founding Managing Director of Realizing Rights: The Ethical Globalization Initiative, and as the Executive Vice President for Programs of the Aspen Institute.

Peggy founded the Self-Employment Learning Project at the Aspen Institute, later named the Economic Opportunities Program in 1991 and in this role, Peggy helped to establish the field of sectoral, or industry-targeted, workforce development with the publication Jobs and the Urban Poor and crafted new legislation to support industry led workforce development. She also led efforts to establish the field of microenterprise development in the US, drafting the first legislation to support microenterprise out of the SBA, leading the first national evaluation of the microenterprise field, and producing the first Directory of US Microenterprise Programs. Prior to that, Peggy was a Program Officer at the Ford Foundation managing a portfolio of women's development, employment, and social enterprise grants in the US and the developing world, and she served as the first Director of Small Scale Enterprise and Credit at Save the Children Federation. Peggy was a leader in founding and shaping the microfinance field internationally, helping to draft the first microenterprise legislation for USAID and serving on the first Microenterprise Advisory Council to the Administrator of USAID.. In 1995, Peggy received the inaugural Presidential Award for Excellence in Microenterprise Development from President Bill Clinton.



#### **ALLAN COUKELL**

Allan Coukell is Pew's senior director for health programs. He oversees initiatives related to drug and medical device innovation and safety, drug pricing, the pharmaceutical supply chain, pharmacy compounding, antibiotic resistance, prescription drug misuse, FDA, and food safety as well as other efforts related to health costs and care delivery.

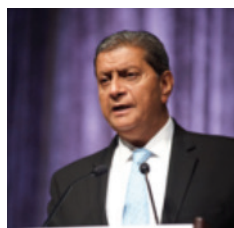
Prior to joining Pew, he practiced as a clinical pharmacist in oncology at the London Health Sciences Center and Ontario Regional Cancer Center, served as a senior medical writer and

editor with the medical journal publisher Adis International, and covered health and science as a reporter and producer for WBUR (NPR) in Boston and Radio New Zealand. He is Vice Chair of the Medical Device Innovation Consortium and a board member of the Reagan Udall Foundation for the FDA. He served previously as consumer representative on the FDA's Cardiovascular and Renal Drugs Advisory Committee.



#### **KENNETH L. DAVIS**

Kenneth L. Davis, MD is the President and CEO of the Mount Sinai Health System in New York City, one of the largest integrated health systems in the nation, which is renowned for providing outstanding medical care to the diverse communities it serves, as well as for its significant global outreach. The Health System encompasses the Icahn School of Medicine at Mount Sinai and seven hospital campuses, and has a large, regional ambulatory footprint. For the decade prior to his appointment as leader of the Health System in 2013, Dr. Davis served as President and CEO of The Mount Sinai Medical Center. Under his direction, Mount Sinai successfully launched a robust era of innovation in research, education, and clinical care. As a neurobiologist, Dr. Davis's pioneering research in Alzheimer's disease led the U.S. Food and Drug Administration to approve three of the first four drugs on the market for the treatment of Alzheimer's disease. A member of the Institute of Medicine of the National Academy of Sciences, he has published more than 575 papers, is recognized as one of the most highly cited researchers in the field of brain diseases, and received numerous grants and awards, including the George H. W. Bush Lifetime of Leadership Award from Yale University, where he was an undergraduate. In 2014 Dr. Davis was appointed as a trustee of the Aspen Institute.



#### **AMIR DOSSAL**

Amir Dossal is Founder and President of the Global Partnerships Forum – a not-for-profit knowledge platform to provide changemakers with tools to build innovative partnerships to address economic and social challenges.

Amir is co-founder of the Pearl Initiative, and Ocean Sanctuary Alliance. He is also a Commissioner of the Broadband Commission for Sustainable Development.

In 2014, H.E. Tommy Remengesau, Jr., President of Palau, appointed Amir as his Special Representative for Global Partnerships. In 2015, he was invited by UN Women to join its global movement for gender equality, as HeForShe Champion. In 2016, Amir was appointed a UN Women Global champion for Planet 50-50 by 2030.

#### **United Nations Service**

Amir is a 25-year veteran of the United Nations, and served as Executive Director of the UN Office for Partnerships until September 2010, which he established in 1998 to manage the \$1 billion gift by media mogul Ted Turner. He is an accomplished diplomat, with a deep understanding of international diplomacy as well as extensive experience in global development and humanitarian issues, including managing complex technical assistance projects in emerging markets.

#### **Pioneering Partnerships and Global Outreach**

Amir Dossal works globally across sectors, including education, environment, finance, health, media, technology, as well as peace, security & human rights. By nature, a social entrepreneur and innovator, his work is an endeavour to bond the power of the private sector, governments, and civil society; in order that together, they may better serve the greater good.

### **Awards and Recognition**

2010 Humanitarian Award from the UN Association of New York, for his accomplishments in Partnerships to End Poverty and World Hunger. In 2010, His Serene Highness Prince Albert II of Monaco appointed Amir as Ambassador for Peace and Sport. In 2015, Amir and his son, Zecki received the Humanitarian Innovation Award for intergenerational partnerships. In 2016, the Institute of Chartered Accountants in England and Wales bestowed Amir with their 2016 Outstanding Achievement Award, for his work in uniting public and private organizations to address the world's economic and social challenges.

### **Personal**

Amir is a UK Chartered Accountant (FCA) and has lived and worked in five continents. He serves on the board of several non-profits and regularly undertakes speaking engagements and frequently serves as moderator for high-level panels, engaging Heads of State and Ministers. Amir is married to Tas, and they have one son, Zecki.



### **ESTHER DYSON**

Esther Dyson is chairman of EDventure Holdings. Her primary activity is investing in and nurturing start-ups, with a recent focus on health care, human capital and aerospace. Overall, she is fascinated by new business models, new technologies and new markets (both economically and politically). From October 2008 to March of 2009, she lived in Star City outside Moscow, Russia, training as a backup cosmonaut. Apart from this brief sabbatical, she is an active board member for a variety of startups.

She has a BA in economics from Harvard and was founding chairman of ICANN from 1998 to 2000. In addition, she wrote the best-selling, widely translated book *Release 2.0: A Design for Living in the Digital Age*, published by Broadway Books in 1997.



### **DEREK FEELEY**

Derek Feeley, President and CEO, Institute for Healthcare Improvement (IHI), an independent, not for profit organization which innovates, convenes, and partners to achieve results in improving health and health care worldwide. Mr. Feeley previously served as IHI's Executive Vice President from 2013 to 2015, during which time he had executive-level responsibility for driving IHI's strategy in five focus areas: Improvement Capability; Person- and Family-Centered Care; Patient Safety; Quality, Cost, and Value; and the Triple Aim. Prior to joining IHI in 2013, Mr. Feeley served as Director General for Health and Social Care in the Scottish Government and Chief Executive of the National Health Service (NHS) in Scotland. In that role he was the principal advisor to the Scottish Government on health and health care policy and on public service improvement. He also provided leadership to NHS Scotland's 140,000 staff in their delivery of high-quality health and health care. In 2013, Mr. Feeley was made a Companion of the Order of the Bath by Her Majesty, Queen Elizabeth II, in recognition of his services to health and health care.



### **HELENE GAYLE**

Helene D. Gayle is CEO of McKinsey Social Initiative, a nonprofit organization that implements programs that bring together varied stakeholders to address complex global social challenges. Previously, she was president and CEO of CARE USA, a leading international humanitarian organization. An expert on global development, humanitarian, and health issues, she spent 20 years with the Centers for Disease Control, working primarily on HIV/AIDS. Dr. Gayle then



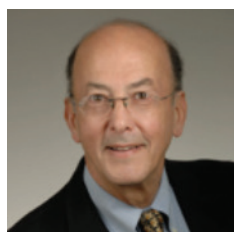
worked at the Bill & Melinda Gates Foundation, directing programs on HIV/AIDS and other global health issues.

Dr. Gayle serves on public company and non-profit boards including: The Coca-Cola Company, Colgate-Palmolive Company, the Rockefeller Foundation, the Center for Strategic and International Studies, the New America Foundation, the ONE Campaign, and the Atlanta Metro Chamber of Commerce.

Additionally, she serves on the President's Commission on White House Fellowships. She is a member of the Council on Foreign Relations, the American Public Health Association, the Institute of Medicine, and the American Academy of Pediatrics.

Named one of Forbes' "100 Most Powerful Women," she has authored numerous articles on global and domestic public health issues, poverty alleviation, gender equality, and social justice.

Dr. Gayle was born and raised in Buffalo, NY. She earned a B.A. in psychology at Barnard College, an M.D. from the University of Pennsylvania, and an M.P.H. from Johns Hopkins University. She has received 13 honorary degrees and holds faculty appointments at the University of Washington and Emory University.



#### **ROGER GLASS**

Dr. Glass was named Director of the Fogarty International Center and Associate Director for International Research by NIH Director Elias A. Zerhouni, M.D., on March 31, 2006.

Dr. Glass graduated from Harvard College in 1967, received a Fulbright Fellowship to study at the University of Buenos Aires in 1967, and received his M.D. from Harvard Medical School and his M.P.H. from the Harvard School of Public Health in 1972. He joined the Centers for Disease Control and Prevention in 1977 as a medical officer assigned to the Environmental Hazards Branch. He was a Scientist at the International Center for Diarrheal Disease Research in Bangladesh from 1979-1983 and returned to Sweden where he received his doctorate from the University of Goteborg. In 1984, he joined the National Institutes of Health Laboratory of Infectious Diseases, where he worked on the molecular biology of rotavirus. In 1986, Dr. Glass returned to the CDC to become Chief of the Viral Gastroenteritis Unit at the National Center for Infectious Diseases.

Dr. Glass's research interests are in the prevention of gastroenteritis from rotaviruses and noroviruses through the application of novel scientific research. He has maintained field studies in India, Bangladesh, Brazil, Mexico, Israel, Russia, Vietnam, China and elsewhere. His research has been targeted toward epidemiologic studies to anticipate the introduction of rotavirus vaccines. He is fluent and often lectures in five languages.

Dr. Glass has received numerous awards including the prestigious Charles C. Shepard Lifetime Scientific Achievement Award presented by the CDC in recognition of his 30-year career of scientific research application and leadership, and the Dr. Charles Merieux Award from the National Foundation for Infectious Diseases for his work on rotavirus vaccines in the developing world. Dr. Glass received the 2015 Albert B. Sabin Gold Medal Award for his many contributions to improving children's health worldwide, including novel scientific research for the prevention of gastroenteritis from rotaviruses and noroviruses. Dr. Glass was also the recipient of the 2016 Cura Personalis Award from Georgetown University. This award honors individuals whose outstanding contributions to human health are guided by compassion and

service. He is a member of the Institute of Medicine of the U.S. National Academy of Medicine. Dr. Glass has co-authored more than 600 research papers and chapters.

He is married to Barbara Stoll, M.D., the H. Wayne Hightower Distinguished Professor in the Medical Sciences and Dean of the University of the Texas Medical School at Houston, and the father of three children: Nina, Michael and Andy Glass.



#### **SHERRY GLIED**

In 2013, Sherry Glied was named Dean of New York University's Robert F. Wagner Graduate School of Public Service. From 1989-2013, she was Professor of Health Policy and Management at Columbia University's Mailman School of Public Health. She was Chair of the Department of Health Policy and Management from 1998-2009. On June 22, 2010, Glied was confirmed by the U.S. Senate as Assistant Secretary for Planning and Evaluation at the Department of Health and Human Services, and served in that capacity from July 2010 through August 2012. She had previously served as Senior Economist for health care and labor market policy on the President's Council of Economic Advisers in 1992-1993, under Presidents Bush and Clinton, and participated in the Clinton Health Care Task Force. She has been elected to the Institute of Medicine of the National Academy of Sciences, the National Academy of Social Insurance, and the Board of AcademyHealth, and has been a member of the Congressional Budget Office's Panel of Health Advisers.

Glied's principal areas of research are in health policy reform and mental health care policy. Her book on health care reform, *Chronic Condition*, was published by Harvard University Press in January 1998. Her book with Richard Frank, *Better But Not Well: Mental Health Policy in the U.S. since 1950*, was published by The Johns Hopkins University Press in 2006. She is co-editor, with Peter C. Smith, of *The Oxford Handbook of Health Economics*, which was published by the Oxford University Press in 2011.

Glied holds a B.A. in economics from Yale University, an M.A. in economics from the University of Toronto, and a Ph.D. in economics from Harvard University.



#### **RICHARD HORTON**

Richard Horton is Editor-in-Chief of The Lancet. He is an honorary professor at the London School of Hygiene and Tropical Medicine, University College London, and the University of Oslo.

Dr Horton joined The Lancet in 1990. He was the first President of the World Association of Medical Editors and he is a Past-President of the US Council of Science Editors. He is a Council member of both the UK's Academy of Medical Sciences and the University of Birmingham and is a Senior Associate of the UK health-policy think-tank, the Nuffield Trust. In 2011, he was elected a Foreign Associate of the US Institute of Medicine.

Richard Horton was born in London and is half Norwegian. He qualified in physiology and medicine from the University of Birmingham in 1986 and received honorary doctorates in medicine from the University of Birmingham, UK, and the University of Umea, Sweden. He has written two reports for the Royal College of Physicians of London: *Doctors in Society* (2005) and *Innovating for Health* (2009) and is author of *Health Wars* (2003). He writes regularly for The New York Review of Books and the TLS. Richard received the Edinburgh medal in 2007 and the Dean's medal from Johns Hopkins School of Public Health in 2009.



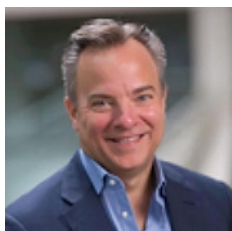
### **ASHISH JHA**

Ashish K. Jha M.D., M.P.H. is the K. T. Li. Professor of Health Policy at the Harvard T.H. Chan School of Public Health, the Director of the Harvard Global Health Institute and a practicing Internal Medicine physician at the VA Boston Healthcare System. As Director of HGHI, Dr. Jha leads research and global convening efforts on critical health issues, including Pandemics and Health Security, Climate Change and Health, and Global Health Quality. Over the past five years, he has also served as Special Advisor for Quality and Safety to the Department of Veterans Affairs. Dr. Jha received his M.D. from Harvard Medical School and trained in Internal Medicine at the University of California, San Francisco where he also served as Chief Medical Resident. He completed his General Medicine fellowship from Brigham and Women's Hospital and Harvard Medical School and received his M.P.H. from Harvard T.H. Chan School of Public Health. His major research interests lie in improving the quality and costs of healthcare with a specific focus on the impact of state and federal policy efforts. His work has focused on four primary areas: public reporting, pay-for-performance, health information technology, and leadership, and the roles they play in effecting the delivery of high quality care in the U.S. healthcare system and globally.



### **VIVIAN LEE**

Dr. Vivian S. Lee, M.D., Ph.D., M.B.A., served as a Senior Vice President of Health Sciences at Huntsman Cancer Institute. Dr. Lee served as senior vice president of Health Sciences at the University of Utah and Dean of the University's School of Medicine. Dr. Lee served as the Chief Scientific Officer, Senior Vice President and Vice Dean at New York University's Langone Medical Center, where she launched new centers in translational and interdisciplinary research. In her four-year tenure at Langone where she has seen a significant jump in research funding from the National Institutes of Health and has recruited numerous research faculty. She is a professor of radiology, physiology and neuroscience and served as Vice Chairwoman for research in the radiology department. She has been a Director at Merrimack Pharmaceuticals, Inc. since November 12, 2014 and Zions Bancorporation since March 2015. Dr. Lee served on the board of Zions First National Bank. A member of the National Institutes of Health Council of Councils, the Journal Oversight Committee for JAMA and the Scientific Advisory Board for the Massachusetts General Hospital, Dr. Lee is a recognized leader in health care and academic medicine. Her accomplishments have won her numerous awards and honors, including the Press Ganey Innovation Award and the Chang-Lin Tien Education Leadership Award. She holds a BA from Harvard-Radcliffe College and was awarded a Rhodes Scholarship to Oxford University, where she earned her doctorate degree in medical engineering in 1989. Dr. Lee earned her M.D. with honors at Harvard Medical School in 1992 and completed an M.B.A. at NYU's Stern School of Business in 2006.

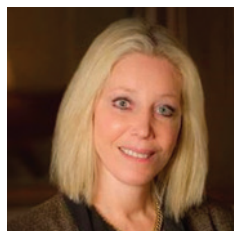


### **MARK MCCLELLAN**

Mark B. McClellan, MD, PhD, is the Director of the Robert J Margolis Center for Health Policy and the Margolis Professor of Business, Medicine and Health Policy at Duke University. He is a doctor and an economist whose work has addressed a wide range of strategies and policy reforms to improve health care, including payment reforms to promote better outcomes and lower costs, methods for development and use of real-world evidence, and approaches for more effective drug and device innovation. Dr. McClellan is a former administrator of the Centers for Medicare & Medicaid Services (CMS) and former commissioner of the U.S. Food and Drug Administration (FDA), where he developed and implemented major reforms in health policy.



Dr. McClellan has served as a member of the President's Council of Economic Advisors and as Deputy Assistant Secretary of the Treasury for Economic Policy. He was also a Senior Fellow at the Brookings Institution and a professor of economics and medicine at Stanford University where he directed the Program on Health Outcomes Research.



#### **ROBIN OSBORN**

Robin Osborn, M.B.A., vice president and director of The Commonwealth Fund's International Health Policy and Practice Innovations program, has responsibility for the Fund's annual International Symposium on Health Policy, annual international health policy surveys of 11 countries and comparisons of health systems data; program on Frugal Innovations; bilateral meetings on health care quality and efficiency with the U.S. and U.K., France, and Canada; the Fund's International Working Group on High Need/High Cost Patients; the Harkness Fellowships in Health Care Policy and Practice; the Australian–American Health Policy Fellowships, and 22 international partnerships with Ministries of Health, research organizations, and health foundations. The core countries participating in the Fund's international program are: Australia, Canada, France, Germany, the Netherlands, New Zealand, Norway, Sweden, Switzerland, the United Kingdom, and the United States. Currently she serves on Price Waterhouse Coopers Health and Care System Architecture Advisory Group and WHO Global Health and Ageing Working Group. Prior to joining the Fund in 1997, Osborn was director of fellowship programs at the Association for Health Services Research (now AcademyHealth), where she directed the Picker/Commonwealth Scholars Program and served as deputy director of the Robert Wood Johnson Foundation Investigator Awards in Health Policy Research Program. While living in London from 1986-1992, she held management positions at BUPA, the largest private health insurer in the United Kingdom, with responsibility for developing managed care programs. Her previous positions include founding managing director of the Miller Institute for Performing Artists at St. Luke's-Roosevelt Hospital Center; executive director of Blue Cross and Blue Shield of Greater New York's corporate foundation; special assistant to the vice president of Blue Cross and Blue Shield for the division charged with quality improvement and cost containment; and assistant director of Jacobi Hospital Center, a 1,400-bed, public safety net hospital. She earned a B.S. with honors at Tufts University and an M.B.A. from Columbia University.



#### **RAJESH PANJABI**

Dr. Rajesh Panjabi is a co-founder and CEO of Last Mile Health and an Associate Physician in the Division of Global Health Equity at Harvard Medical School, Brigham and Women's Hospital. Raj grew up in Liberia and fled the civil war with his family when he was nine years old, but he returned to Liberia in 2005 as a medical student to work with the Liberia Ministry of Health, advising the country's National Health Plan while serving as a clinician in rural government health facilities for three years. Raj is a recipient of the Skoll Award for Social Entrepreneurship (2017), the TED Prize (2017), and the Global Citizen Movement Award (2013). He was named one of TIME's "100 Most Influential People" (2016), one of Fortune's "World's 50 Greatest Leaders" (2015, 2017), a Draper Richards Kaplan Foundation Social Entrepreneur, and an Echoing Green Fellow (2011). Raj holds a bachelor's degree from the University of North Carolina at Chapel Hill, is a graduate of the University of North Carolina School of Medicine, and received a Master of Public Health from the Johns Hopkins Bloomberg School of Public Health. He also served as a Clinical Fellow at Harvard Medical School and the Massachusetts General Hospital.



### **BOBBY PRASAD**

Professor Bobby Prasad is a Consultant Gastroenterologist and Visiting Professor at the University of West London and has been in clinical practice for over twenty years having worked at senior levels in the UK and United States within both the Public and Private Sectors. Until the beginning of 2017, he served as the Global Chief Medical Officer of The Abraaj Group. At Yale, he was on Faculty as an Attending Physician and was the recipient of a Yale New Haven Hospital All Star Award. He was previously Lead Physician for Gastroenterology and Hepatology at Chelsea & Westminster Hospital, London, where he was the recipient of the prestigious Imperial College Faculty of Medicine Teaching Excellence Award. He has also been actively involved in large scale healthcare quality assessment and improvement projects within major global growth economies. Professor Prasad's education includes Oxford and Yale Universities. He trained at Guy and St Thomas' Hospital, London and Boston, USA completing his Fellowship at Yale University, USA. He has an Executive MBA from the Saïd Business School, University of Oxford and is a Fellow of both the Royal College of Physicians of London and the American College of Physicians. He studied French, German and Italian during his secondary education and is fluent in Hindi and Urdu. He is a Trustee of the Nicholls Spinal Foundation.



### **SOMAVA STOUT**

Somava Stout, MD, MS (Soma) has dedicated her career to improving health, wellbeing and equity through health system and community transformation. She is currently Vice President at the Institute for Healthcare Improvement (IHI) and serves as Executive Lead of 100 Million Healthier Lives, which brings together 1000+ partners to achieve system transformation in health, wellbeing and equity, with improvement in the lives of 100 million people globally by 2020. She has worked as a primary care internist and pediatrician in the safety net and a global public health practitioner for over 20 years and has worked with health system leaders from across the world in Guyana, Sweden, the United Kingdom, Singapore, Australia, Tunisia, Denmark and Brazil.

Previously, Dr. Stout served as Vice President for Patient Centered Medical Home Development at Cambridge Health Alliance (CHA), where she led a whole system transformation of leadership, care delivery, workforce, and finances that garnered numerous national awards and achieved breakthrough results in health outcomes and cost for a safety net population. She served as Co-Director of Leadership Development at the Harvard Medical School (HMS) Center for Primary Care, developing a cadre of change leaders across the system. She continues as faculty at both CHA and HMS. In 2012, Dr. Stout was recognized as one of ten inaugural Robert Wood Johnson Foundation Young Leaders for her contributions to improving the health of the nation.



### **MIRIAM WERE**

Prof. Miriam K. Were, a medical doctor, public health specialist, teacher and publisher was born on April 12, 1940.

She is currently the Chairman of Kenya's National AIDS Control Council (NACC) and the Board of AMREF (Africa Medical and Research Foundation) and on numerous other Boards.

Prof. Were started out as a High School biology and chemistry teacher in 1965. She later enrolled in Medical School due to frustration from lack of health services for sick students and children. In 1973, she graduated as a Medical Doctor from the University of Nairobi, being awarded the

Best All-Round Graduating Medical Student Prizes. She worked in the Ministry of Health before joining the Faculty of Medicine of the University of Nairobi on her journey to teaching Public Health. She holds both Masters (MPH) and Doctor of Public Health (Dr PH) degrees from the John Hopkins University of USA.

Between 1976 and 1982, while teaching Public Health, she was the Director of the National Pilot Project on Community Based Health Care (CBHC), in the pre Alma Ata period that addressed community participation in the improvement of their health. She has remained engaged in PHC work ever since. Between 1985 - 2000, Miriam Were worked in agencies of the United Nations; UNICEF, WHO and the United Nations Population Fund retiring at the level of D2.

Prof. Miriam K. Were has received many honours and awards in her professional life. These include receiving National honors from the President of Kenya in 2005 for distinguished service to the nation, The Trail Blazer Award of the Women in Leadership Group by the Global Young Women's Christian Association (YWCA) in 2007. She was also selected from the entire Commonwealth for the 2007 Queen Elizabeth II Gold Medal for Outstanding contributions to International Public Health and Supporting the Health Needs of Disadvantaged people.

She finds her engagement in the work of the Global Health Workforce Alliance the crowning experience of her professional life.



#### **DEREK YACH**

Derek Yach has focused his career on advancing global health. He is currently the Executive Director of the Vitality Institute.

He was previously the Senior Vice President of Global Health and Agriculture Policy at PepsiCo where he supported portfolio transformation and led engagement with major international groups as well as new African initiatives at the nexus of agriculture and nutrition. He has headed global health at The Rockefeller Foundation, been a Professor of Global Health at Yale University, and is a former Executive Director for Non-Communicable Diseases and Mental Health of the World Health Organization (WHO). At WHO, Dr. Yach served as cabinet director under Director-General Gro Harlem Brundtland, where he led the development of WHO's Framework Convention on Tobacco Control and the Global Strategy on Diet and Physical Activity. Yach established the Centre for Epidemiological Research at the South African Medical Research Council. He has authored or co-authored over 200 articles covering the breadth of global health, regularly publishes blog posts, and is cited by The Huffington Post, The New York Times and The Economist. Dr. Yach serves on several advisory boards including those of the Clinton Global Initiative, the New York Academy of Sciences, the World Economic Forum, the NIH's Fogarty International Centre, the Mass General Global Health Board and PepsiCo's Scientific Advisory Board. He is Chairman of the Board of Cornerstone Capital. His degrees include an MBChB from the University of Cape Town, BSc (Hons Epi) from the University of Stellenbosch; an MPH from the Johns Hopkins Bloomberg School of Public Health; and a DSc (Honoris Causa) from Georgetown University. He lives in Connecticut, USA and is an avid swimmer.

## Task Force Members



### CHASE ADAM

Chase Adam is the cofounder and CEO of Watsi. Before the age of 21, Chase traveled, worked, or studied in more than 20 countries around the world. He spent time in private-sector intelligence in Washington, helped start a national health program in Haiti, served in the Peace Corps in Costa Rica, and launched a small business loan fund in San Francisco. Chase was recognized by the White House as a Champion of Change, he's a Forbes 30-under-30, and he was named the 2016 Visionary of the Year by the San Francisco Chronicle.



### KAOSAR AFSANA

Prof Dr. Kaosar Afsana is Director of the Health, Nutrition and Population Programme at BRAC in Bangladesh. She has been with BRAC since 1992. She is a faculty member at the James P Grant School of Public Health, BRAC University and an MD with MPH from Harvard University, USA and PhD from Edith Cowan University, Australia. Her portfolio within BRAC covers a wider spectrum of health, nutrition and population sectors reaching 120 million people through community reach. She plays a critical role in policy-making/planning and programme design/implementation, particularly in reproductive and sexual health, maternal, neonatal, child and adolescent health and nutrition and m-Health at organization, national and global levels. Prof Afsana authored two books, is published widely, and has been awarded with many prestigious awards. She represents BRAC as a member of various national and international bodies.



### SONIA ANGELL

Dr. Sonia Angell is a Deputy Commissioner at the New York City Department of Health and Mental Hygiene, overseeing the Division of Prevention and Primary Care. This Division works to advance population health by improving access to high-quality health services and health insurance and introducing innovative system changes that promote disease prevention and control. Previously Dr. Angell was a Senior Advisor for Global Noncommunicable Diseases at the Centers for Disease Control and Prevention (CDC). Dr. Angell is board certified in internal medicine and is an Assistant Clinical Professor of Medicine at the College of Physicians and Surgeons of Columbia University and an Assistant Attending Physician at New York Presbyterian Hospital. She received her medical degree from the University of California San Francisco and completed her residency in Internal Medicine at Brigham Women's Hospital. She has a Diploma in Tropical Medicine and Hygiene from the London School of Hygiene and Tropical Medicine, and a Masters in Public Health, Epidemiology from the University of Michigan. She is a former Robert Wood Johnson Clinical Scholar. She is a Fellow of the second class of the Aspen Institute Health Innovators Program.



### KOKU AWOONOR-WILLIAMS

Director Policy Planning Monitoring and Evaluation of the Ghana Health Service and an architect of Ghana's Community-based Health Planning and Services (CHPS) strategy. He was Regional Director of Health Services for the Upper East Region of Ghana for 8 years, and District Medical Officer and Medical Superintendent for over 16 years. He was Co-PI of Ghana Essential Health Intervention Project (GEHIP) funded by the DDCF under the African Health



Initiative and currently Co-PI Implementation of CHPS+ funded by DDCF. He is a Board member of Global Doctors for Choice (GDC). Koku is a Senior Lecturer, Columbia University MSPH and a Collaborating Scientist of ARChES. He is a medical doctor and a public health specialist. Holds a PhD in Epidemiology and Health Systems from University of Basel.



#### **JAY D. BHATT**

Dr. Jay Bhatt serves as Senior Vice President and Chief Medical Officer of the American Hospital Association and President of HRET.

Most recently, he was the first Chief Health Officer at the Illinois Health & Hospital Association. In this role, he led large improvement projects.

Previously, he was Managing Deputy Commissioner and Chief Innovation Officer for the Chicago Department of Public Health (CDPH). There he led the implementation of Healthy Chicago, the city's public health agenda, and innovations in cross-sector partnerships, predictive analytics, epidemiology and informatics. Under his guidance, the department has been recognized both nationally and internationally in their approach to using predictive analytics to improve food inspections, chronic disease, West-Nile and lead inspections.

He also is a practicing internal medicine physician for Erie Family Health Center in Chicago serving vulnerable populations and is a member of the Feinberg School of Medicine at Northwestern faculty.

In 2012, he received his Master's in Public Administration from the Harvard Kennedy School of Government. Dr. Bhatt was a White House Fellows National Finalist in 2013. In 2016, he was a Crain's Chicago 40 under 40 recipient and selected to the prestigious Presidential Leadership Scholars Program in 2016.



#### **NICOLA DELL**

Nicki Dell is an Assistant Professor in Information Science at Cornell Tech. Her research spans Human-Computer Interaction (HCI) and Information and Communication Technologies for Development (ICTD) with a focus on designing, building, and evaluating novel computing systems that improve the lives of underserved populations in low-income regions. Nicki's research and outreach activities have been recognized through numerous paper awards and fellowships, including a Graduate Facebook Fellowship and a Google Anita Borg Scholarship. Nicki was born and raised in Zimbabwe and received a B.S.c in Computer Science from the University of East Anglia (UK) in 2004, and an M.S. and Ph.D. in Computer Science and Engineering from the University of Washington in 2011 and 2015 respectively.



#### **JAMES FAGHMOUS**

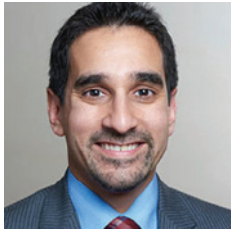
Dr. Faghmous is Assistant Professor in Population Health Science and Policy at the Icahn School of Medicine at Mount Sinai.

His work combines algorithmic, statistical, and scientific thinking to accelerate scientific discoveries in big data applications. He is one of the proponents of theory-guided data science in which novel data science methods are combined with a domain's first principles to make significant and lasting discoveries. His PhD thesis from the University of Minnesota ranked



fourth globally in data mining, and is one of the first practical examples of theory-guided data science at the intersection of data mining and global climate change. In 2014, it was awarded the Best Dissertation Award in physical sciences in engineering, the university's highest distinction for graduate work.

At University of Minnesota, Dr. Faghmous was a National Science Foundation (NSF) Graduate Research Fellow, and prior to that, a National Institutes of Health (NIH) Neuro-Physical-Computational Fellow. He graduated Magna Cum Laude from the City College of New York where he was a Rhodes and Gates Scholar nominee.



#### **NIYUM GANDHI**

Niyum Gandhi is the Executive Vice President and Chief Population Health Officer of the Mount Sinai Health System. In this role, he oversees Mount Sinai's transition from a primarily fee-for-service model of care to one that is also inclusive of value and risk-based population health.

Mr. Gandhi's role involves aligning the Health System's clinical and economic transformations in support of Mount Sinai's vision to be the leading population health manager in the competitive New York market, as well as the best possible partner to the Health System's broad physician community. This includes fostering care management and clinical model redesign to ensure that high-value care is delivered by the Health System and its partners, working with payers to establish the new economic models that support the delivery of value-based care, and building the Health System's clinically integrated network – Mount Sinai Health Partners IPA, LLC.

Prior to his position at Mount Sinai, Mr. Gandhi served as a partner in the Health and Life Sciences consulting practice of Oliver Wyman in Chicago, where he focused on value-based health care strategy and transformation for physician groups, hospitals, and health plans. At Oliver Wyman, Mr. Gandhi also worked with a variety of Accountable Care Organizations (ACOs) and other population health management companies, helping them design and implement value-based clinical models, develop value-based contracts and integrated product distribution strategies, align physician incentives toward value, and establish the appropriate infrastructure to support population health management.

Mr. Gandhi holds an AB in economics and finance from Harvard University. He has authored several articles on ACOs, payer/provider partnerships, and physician engagement and serves as a regular conference speaker on a variety of issues related to population health and value-based care.



#### **DAVID HELLER**

David Heller is a practicing internist and clinician-investigator who studies how to adapt primary care health systems in developing countries for the prevention and control of non-communicable diseases.

As an assistant professor in the Department of Health System Design and Global Health, and the Division of General Internal Medicine, both at Mount Sinai, Dr. Heller focuses his work on cardiovascular disease control in Uganda and Ghana.

As a Fogarty fellow in Mbale, Uganda, Dr. Heller conducted an evaluation of hypertension control programs associated with the SEARCH study, a randomized controlled trial of

universal test-and-treat programs for HIV prevention and control.

As a primary care research fellow at the University of California, San Francisco, Dr. Heller studied the impact of university-policymaker partnerships on implementation of the Affordable Care Act, and the comparative effectiveness of statin use guidelines for primary prevention of cardiovascular disease.

In addition to peer-reviewed publications, Dr. Heller's writings have appeared in The Washington Post, the San Francisco Chronicle, and The Lancet editorial series.

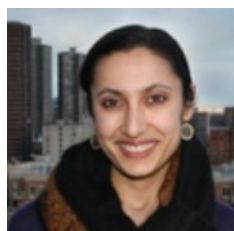


#### **JONATHAN JACKSON**

Jonathan Jackson is a social entrepreneur, innovator, and dynamic leader with extensive mobile technology expertise in both low-income and high-income settings. He has co-founded multiple organizations focused on improved healthcare delivery and poverty alleviation.

As co-founder and CEO of Dimagi, Jonathan has overseen the growth of the company from the founding team to over 100 employees worldwide that operate programs in over 50 countries. He made an uncompromising commitment to open source software and developed a highly interactive collaborative culture that fosters partnerships across academics, philanthropists, and implementers.

Jonathan holds both a bachelor's and a master's degree in Electrical Engineering and Computer Science from MIT. He also co-founded Cogito Corp, a pioneering behavioral analytics company. Jonathan is a visiting scientist at Brigham and Women's Hospital Decision Systems Group and a lecturer at the Harvard-MIT Division of Health Sciences and Technology.



#### **MANMEET KAUR**

Manmeet Kaur founded City Health Works in 2012 to create a business case for the integration of local health coaches into the U.S healthcare system. Prior, she was an advisor to the One Million Community Health Worker Campaign and worked on community health and workforce initiatives in South Africa (Mamelani Projects), India (LabourNet) and NYC (the Brennan Center for Justice). In her time abroad Manmeet saw the potential for reverse innovation from lower cost health systems when applied to the U.S.

Manmeet's work has been featured in PBS Newshour, The Economist, NPR, the New England Journal of Medicine, the Commonwealth Fund, the NY Daily News, the Brookings Institution and NationSwell. She earned an MBA from Columbia University and a BA from Barnard College, where she was selected as a Third Millennium Human Rights Fellow. Manmeet is a GLG Social Impact Fellow, Draper Richard Kaplan Foundation Social Entrepreneur, a PopTech Social Innovation Fellow and serves on the Board of the Sikh Coalition. Manmeet was born and raised in New York and lives in New York with her husband and two sons.



#### **SANDEEP KISHORE**

Sandeep P. Kishore, Sunny, is the Associate Director of the Arnhold Institute for Global Health, an Assistant Professor in the Department of Medicine, and the Department of Health System Design and Global Health at the Icahn School of Medicine at Mount Sinai.

He is also the founder of the global non-profit, Young Professionals Chronic Disease Network;

his work focuses on the prevention and control of chronic illness in poor communities globally. Dr. Kishore is the inaugural Lancet Awardee for Community Service, an MIT Dalai Lama Center Fellow, a Paul and Daisy Soros Fellow, and a term member of the Council on Foreign Relations. His work has been featured in the United Nations General Assembly, TEDMED, the WHO Executive Board and in journals including Health Affairs, The Lancet and JAMA.



#### **KEDAR MATE**

Kedar Mate, MD, Chief Innovation and Education Officer, Institute for Healthcare Improvement (IHI), oversees the development of innovative new systems designs to implement high-quality, low-cost health care both in the US and in international settings. An internal medicine physician, Dr. Mate is also an Assistant Professor of Medicine at Weill-Cornell Medical College and a Research Associate at Harvard Medical School's Division of Global Health Equity. His current research activities include improving population management, behavioral health integration, health equity, addressing complex needs patients, and ambulatory patient safety. Dr. Mate serves as a senior advisor to IHI's programs in the US, Asia, and the Middle East and he serves as an IHI principal investigator on multiple research awards. Previously he worked with Partners In Health, served as a special assistant to the Director of the HIV/AIDS Department at the World Health Organization, and led IHI's national program in South Africa. Dr. Mate has published numerous peer-reviewed articles, book chapters, and white papers and he has delivered keynote speeches in forums all over the world. He graduated from Brown University with a degree in American History and from Harvard Medical School with a medical degree.



#### **HELEN MCGUIRE**

As PATH's program leader for noncommunicable diseases (NCDs), Helen McGuire is responsible for overall leadership, strategic direction and business development, donor relations, and management and implementation of the NCD Program at PATH. She provides leadership and technical guidance to country programs to develop and implement their NCD programs, including integration of hypertension into the PEPFAR/USAID platform in Kenya, improving access to hypertension diagnosis and care in Vietnam, and building the evidence and advocating for availability of affordable essential medicines and technologies with early studies completed in Kenya and Senegal.

Ms. McGuire provides thought leadership to the global health field in the prevention and management of NCDs in low-resource settings and develops and helps facilitate effective external collaborations, including public/private partnership opportunities through industry engagement and collaborations with individuals, donors, and organizations to achieve existing NCD project goals. She is a resource to local public health policymakers and planners in reviewing evidence and establishing policies and guidelines for NCD prevention and management programs.

Prior to joining PATH in 2013, Ms. McGuire served as acting director of policy and programs at the International Diabetes Federation (IDF), where she led strategy implementation for diabetes education and health systems in collaboration with national member associations and global leaders in diabetes. She has work experience in Kenya, Vietnam, China, India, Senegal, the United States, and Canada, and she has authored or coauthored several peer-reviewed publications.

Ms. McGuire holds a masters in health administration from the University of Toronto, Canada.



#### **WENDY MCWEENY**

Wendy McWeeny is a Senior Advisor at the MCJ/Amelior Foundation where she oversees the foundation's international portfolio. In this role she helped to establish Millennium Promise, an organization focused on meeting the MDGs by 2015 and Malaria No More, which is dedicated to ending deaths from malaria.

Wendy also supports the communications efforts of the Special Envoy's Office and special projects, including the partnership with Harvard University's Defeating Malaria Initiative and the UN Secretary General's MDG Advocates.

Wendy holds a BA from Princeton University where she also earned a Masters degree in Public Administration from the Woodrow Wilson school.



#### **RACHEL NUGENT**

Rachel Nugent, Vice President of Global Noncommunicable Diseases at RTI International, is a world-renowned expert in global noncommunicable diseases (NCDs) and has more than 30 years of experience in global development as a researcher, practitioner, and policy advisor to governments. In addition to her research contributions, she has advised the World Health Organization, the U.S. government, corporations, foundations, and nonprofit organizations on the economics and policy environment of NCDs. She is a member of the International Expert Group for the Global Nutrition Report, the Lancet Commission on Noncommunicable Diseases and Injuries of the Poorest Billion, and the Institute of Medicine Committee on Economic Evaluation, and she works with the World Health Organization Global Coordination Mechanism Working Group on Noncommunicable Disease Financing. She also is on the External Advisory Committee of the NCD Alliance, Children's Heartlink, and the boards of other global and regional health and nutrition advocacy organizations. She was a member of the Institute of Medicine Committee on the Cardiovascular Disease Epidemic in Developing Countries, the World Economic Forum Global Agenda Council on Chronic Diseases and Well-Being, a contributor to the Disease Control Priorities Project in Developing Countries, 2nd edition, and Series Editor and Principal Investigator for Disease Control Priorities, 3rd Edition.



#### **MARCELLA NUNEZ-SMITH**

Dr. Nunez-Smith, MD, MHS, is an Associate Professor at the Yale School of Medicine, Associate Professor at the Yale School of Public Health, Core Faculty in the Robert Wood Johnson Foundation Clinical Scholars Program, and Research Faculty at Yale's Global Health Leadership Institute. Dr. Nunez-Smith's research focuses on promoting healthcare equity for vulnerable populations with an emphasis on healthcare workforce development, patient assessment of healthcare experiences, and healthcare system strengthening to address chronic disease in low and middle resource settings. She is the principal investigator on several NIH and foundation-funded research projects, including an NIH-funded project to develop a tool to assess patient reported experiences of discrimination in healthcare. In 2011 she received NIH funding to establish the Eastern Caribbean Health Outcomes and Research Network (ECHORN), a research collaborative across four Eastern Caribbean islands that will recruit and follow a community-dwelling adult cohort to examine chronic disease burden and to enhance health outcomes research and leadership capacity in the region. Dr. Nunez-Smith has received numerous awards including the Association of American Medical College's Herbert W. Nicken's Faculty Fellowship in 2008 in recognition of her contributions to healthcare workforce diversity and healthcare equity research and

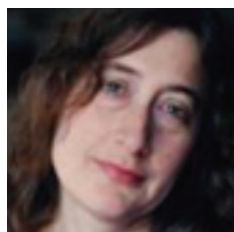


a 2011 American Medical Student Association's Women Leaders in Medicine award. Dr. Nunez-Smith has a BA from Swarthmore College, an MD from Jefferson Medical College, and an MHS from Yale University.



#### **MICHAEL PARK**

Mike is the Director of the Aspen Management Partnership for Health, a program of Aspen Global Health & Development which works with ministries of health in Sub-Saharan Africa to build stronger leadership & management capacity in support of scaling up community health worker systems. He joined the Aspen Institute from McKinsey & Company, where he advised public, private and social sector organizations in Africa, Asia, Europe and the US on public health and health systems strategy. While at McKinsey, he was seconded to the Global Alliance for Improved Nutrition to help develop and launch the Access to Nutrition Index, a ranking of the world's largest food and beverage companies on their nutrition practices. As a practicing primary care physician, he served as an Assistant Professor at the University of Colorado and an Assistant Editor at the Journal of Family Practice. Mike holds a Doctor of Medicine from the University of Illinois and a Master of Public Health from Harvard University.



#### **REBECCA PERL**

Rebecca Perl is Director of Strategic Partnerships and Initiatives for Vital Strategies. She is responsible for guiding VS work at the United Nations and the World Health Organization on NCD prevention.

In addition, Ms. Perl directs Vital Strategies tobacco control media campaign work to support policy and cessation in 10 priority countries including China and India.

Ms. Perl has extensive experience as a journalist and consultant specializing in public health and consumer health. Most notably, she spent seven years covering these subjects as a health science correspondent for National Public Radio, winning the coveted Peabody Award for her reporting on tobacco and a DuPont Award for her coverage of cancer.

She has also taught radio reporting at Columbia University, School of Journalism, and food writing at New York University in the department of Nutrition Studies.

Ms. Perl is conversant in French and holds an MS in Journalism from Columbia University.



#### **MEENAL PORE**

I have been working on Healthcare projects within IBM Research in the Zurich and Nairobi labs since December 2013. Most recently I have been PI on a project to improve epidemic preparedness as part of the post-Ebola recovery strategy for Sierra Leone. The project was selected for one of USAID's Ebola Grand Challenge awards. My academic interests are image processing, and increasingly data science and machine learning.

Prior to joining IBM I completed my MEng in Chemical Engineering and PhD in Chemical Engineering and Biotechnology at the University of Cambridge. My graduate research focused on the development of novel MRI pulse sequences and image segmentation methods for engineering applications of MRI.



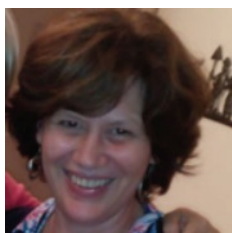


#### **CLAIRE QURESHI**

Claire Qureshi co-leads efforts on community health and frontline delivery for the Office of the UN Special Envoy, with an emphasis on supporting African countries to sustainably finance their community health programs. In this capacity, she engages closely with ministries of health, official donors, private investors, NGOs, and multilateral partners. Claire also serves as the interim director for the Financing Alliance for Health, a multi-partner initiative to support African governments in building resilient health systems that, over time, become financially self-sufficient through innovative financing. Finally, Claire serves as a key advisor on an effort to expand community health in the U.S., in part by drawing on global lessons.

Before she joined the Office of the UN Special Envoy, Claire was a consultant with Results for Development and for McKinsey & Company, where she primarily served hospitals, health systems, and pharmaceutical companies.

In addition to her work in global and domestic healthcare, Claire also served in the Office of the Chief of Staff at the U.S. Treasury Department, covering international affairs, terrorism and financial intelligence, and tax policy for Secretary Geithner. While in graduate school, Claire was a White House Intern and worked with the Office of the Chief of Staff and the National Economic Council. Claire received her MBA from Harvard Business School and her B.A. from Yale University.



#### **CARINE ROENEN**

After graduating as a medical doctor at the University Of Antwerp, Belgium, Carine first practiced medicine in Rwanda, where she lived for six years. Managing the hospital and its health insurance plan in rural Rwanda made her aware of the systematic nature of health and health care, and lead her to obtain a Master's Degree in Public Health in her hometown of Antwerp, Belgium, in 1995. After a short contract as research assistant at the Department of Public Health, Prince Leopold Institute for Tropical Medicine in Antwerp, Carine moved to Haiti. Since December 1995 she has been leading multidisciplinary teams to design and implement development programs, first with Médecins sans Frontières, then with the Belgian Bilateral Cooperation, and with Concern Worldwide. She also served on the board of Fonkoze from 2005 to 2008 and was closely involved with piloting Fonkoze's graduation program. As Executive Director of Fonkoze, the Foundation, she's leading the team that provides the development service package to the Fonkoze members, the Haitian women who have joined Fonkoze to find the financial and social services they need to lift their families out of poverty.



#### **STELLA SAFO**

Dr. Safo A. Stella is an HIV primary care physician and Assistant Professor of Medicine at the Icahn School of Medicine at Mount Sinai. She is the Program Director for Health System Design at the Arnhold Institute for Global Health in the Mount Sinai Health System, where she leads the design and development of effective population health care models.

Dr. Safo completed a residency in Primary Care and Social Medicine at Montefiore Medical Center in the Bronx and subsequently completed an HIV Clinical Scholars Fellowship with HIV Medicine Association at Montefiore.

Dr. Safo is from Ghana and was raised in Brooklyn and Long Island, New York. She currently resides in Harlem, New York City.



#### **SYLVANA SINHA**

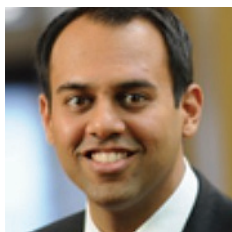
Ms. Sinha is the Founder & CEO of Praava Health, which is building a health system in Bangladesh offering quality, reliable, patient-centric, and technology-enabled family doctors and diagnostics. An attorney and entrepreneur with a passion for innovative, impactful approaches to governance and international development, Ms. Sinha has over a decade of experience leading diverse, interdisciplinary teams in international law, business, development, and government relations, including at major international law firms, management consulting firms, the World Bank, and think tanks in the Middle East and South Asia. Based out of New York City, Ms. Sinha's legal practice included Investor-State and commercial arbitrations and international litigation. Her clients consisted primarily of Fortune 500 companies and other multinational entities involved in international disputes. She has also advised governments in Afghanistan, the Middle East, and Asia on governance and legal reform, and has counseled multinational and regional corporate clients investing and engaged in disputes in these and other markets on political, economic, and legal risk. Ms. Sinha served as a foreign policy advisor to the 2008 Presidential campaign of then-Senator Barack Obama. She also served as a Term Member of the Council on Foreign Relations. Ms. Sinha is a graduate of Columbia Law School, where she earned a certificate from the Parker School of Comparative and International Law, and earned a master's degree in Public Administration / International Development from Harvard's Kennedy School and her Bachelor of Arts (with honors) in Economics and Philosophy from Wellesley College.



#### **ADAM TAYLOR**

Adam Taylor joined Global to Local in May of 2010 and is responsible for the overall management of the organization. Adam previously worked as a Project Manager for the Grameen Technology Center on the Ugandan-based Community Knowledge Worker project, which leverages the power of mobile phones to help small-holder farmers access important information such as market prices. From 2005-2007, Adam served as Program Manager for Catholic Relief Services in Madagascar.

He graduated from the University of Washington, Evans School of Public Affairs with a Master of Public Administration.



#### **KRISHNA UDAYAKUMAR**

Krishna Udayakumar, MD, MBA is head of global innovation for Duke Medicine. In this role, Udayakumar is responsible for the development and implementation of global strategy as well as business development for Duke Medicine.

Through Duke Medicine Global, he works closely with leaders across the medical center to expand Duke's international activities and develop global partnerships across translational and clinical research, global health, education and training, health care delivery, health care management, and related areas.

Udayakumar also serves as executive director of the Innovations in Healthcare, a non-profit organization affiliated with Duke Medicine that seeks to support innovators to scale and replicate successful health care delivery solutions globally. Working directly with entrepreneurs around the world as well as supporters from industry, academia, foundations, and governments, Innovations in Healthcare seeks to facilitate the growth of transformative models of care across developing and developed economies.

Providing business strategy and business development support for the Duke Translational Medicine Institute, he also serves as assistant professor of global health and medicine at Duke University as well as assistant professor at Duke-NUS Medical School.

In addition, he is associate program director of the Duke Medicine Management and Leadership Pathway for Residents, an innovative graduate medical education program combining clinical and management training.

He was born in Bangalore, India, and moved to the United States with his family at the age of seven, growing up in Virginia. Udayakumar is a Phi Beta Kappa graduate of the University of Virginia, having received his bachelor's degree in interdisciplinary studies with distinction in 1999. He received both an MD from the Duke University School of Medicine and an MBA (with a concentration in health sector management) from the Fuqua School of Business at Duke University in 2004, where he was a Fuqua Scholar. Udayakumar completed his residency training in internal medicine at Duke and served as assistant chief resident at the Durham VA Medical Center.



#### **REBECCA WEINTRAUB**

Rebecca Weintraub, MD is an Assistant Professor in the Department of Global Health and Social Medicine at Harvard Medical School and an Associate Physician in the Division of Global Health Equity at Brigham and Women's Hospital. She serves as the Associate Director of the Harvard Global Health Institute and the Faculty Director of the Global Health Delivery Project at Harvard University. Dr. Weintraub is a practicing internist at Brigham and Women's Hospital. She has led the research and development of Cases in Global Health Delivery, a collection of 35 Harvard Business School case studies with Harvard Business Publishing, available online at no cost to the public and taught at over 500 schools of medicine, public health, and business. Since 2008, Dr. Weintraub has led GHDonline.org, a network of virtual communities that connects 15,000+ health professionals from more than 180 countries and 5,000 organizations. Her research on value based health care delivery has been funded by the Agency for Healthcare Research and Quality, the Global Fund, World Health Organization and the Bill & Melinda Gates Foundation.

Dr. Weintraub co-founded Jumpstart, the national AmeriCorps program reaching more than 50,000 preschoolers and their communities. She serves as a technical advisor to Ashoka, promoting the work of health entrepreneurs, and as a board member of several nongovernmental organizations. In 2014, the World Economic Forum honored Dr. Weintraub as a Young Global Leader. Dr. Weintraub graduated from Yale University, Stanford School of Medicine, and completed her medical training at Brigham and Women's Hospital.



### **PRABHJOT SINGH**

Prabhjot Singh, MD, PhD is Director of the Arnhold Institute for Global Health and Chair of the Department of Health System Design and Global Health at the Icahn School of Medicine at Mount Sinai, as well as Special Advisor for Strategy and Design at the Peterson Center for Healthcare.

In 2013, he co-founded the One Million Community Health Worker Campaign with Jeffrey Sachs, which is an initiative of the African Union and UN Sustainable Development Solutions Network. In 2015 he was invited to join the UN Broadband Commission's Information and Communication Technologies working group to build scalable health platforms to achieve the Sustainable Development Goals. In 2016, his Arnhold Institute team, in partnership with the UN Secretary General Special Envoy's Office, will launch the Health Equity Atlas of Africa, an open framework to drive collaboration between data scientists, health system experts and frontline health workers.

Domestically, Singh was the founding technical advisor of City Health Works, a Harlem-based social enterprise that trains and manages locally hired health coaches to improve the outcomes and decrease the costs of care for high need patients. More recently, his practice transformation team at Mount Sinai Health System builds upon this experience by focusing upon the scalability and sustainability of population health care models. The Mount Sinai Health System is an active participant in the national 100 Million Healthier Lives Campaign, which bridges the gaps between healthcare system and neighborhood interests.

Previously, Prabhjot was a professor of International and Public Affairs at Columbia University and Director of Systems Design at the Earth Institute. He completed a BA & BS at University of Rochester, an MD at Cornell and PhD in Neural & Genetic Systems at Rockefeller University, with a Post-Doctoral fellowship in Sustainable Development at Columbia University. He completed residency in Internal Medicine at Mount Sinai Hospital. He is a Robert Wood Johnson Foundation Young Leader, a Truman National Security Fellow, and term member of the Council on Foreign Relations.

His work has been featured in Health Affairs, the New England Journal of Medicine, The Lancet and in popular press (New York Times, NPR, TED). He is the author of the forthcoming book called Dying and Living in the Neighborhood: A Street-Level View of America's Healthcare Promise, to be published by Johns Hopkins University Press in 2016.



### **DAVID BERMAN**

As Chief of Staff at the Arnhold Institute for Global Health, David Berman is responsible for planning and directing the Institute's administrative, operational, financial, and strategic functions, working with all business units within the Institute, as well as the Icahn School of Medicine at Mount Sinai, and key external stakeholders. David ensures an efficient flow of information between the Arnhold director and key staff, internal and external partners, funders, policymakers, and media. He works with the director and the Institute's team to identify and address opportunities and challenges.

Prior to joining the Arnold Institute, David led business development at Next Street Financial LLC and was the principal at a private consulting practice providing advisement and strategic

planning to mission-driven organizations around high-impact programming and compliance. David's clients included a wide range of global and nonprofit organizations. David has also served as Special Assistant to the President of the Children's Health Fund and was the Associate Director at New York University's Center for Catastrophe Preparedness and Response where he managed university-wide, federally funded projects. In his early career, David was a senior financial analyst at several Silicon Valley startups.

David is a leader in translating advocacy campaigns into action. He has secured funding for and coordinated a conference on disaster case management resulting in an unprecedented agreement between federal agencies to restructure case management.

In addition, David has organized a coalition between prominent children's advocacy organizations to solicit answers on child poverty, and he is on the board of advisors for two companies innovating ways to digitally engage people in philanthropy.

David is originally from Southern California and resides in Cold Spring Harbor, NY, with his wife and daughter.



#### **GERALDINE LLAMES**

Geraldine Llames is a Project Manager at the Arnhold Institute for Global Health at Mount Sinai. In addition to supporting the Global Advantage project, she is the project manager for the Atlas project, the Action Center team, and the Education team. Prior to joining the Arnhold Institute, Geraldine worked as a consultant for Accenture Federal and Java Productions Inc., where she was involved with several different government agencies. Her previous work includes project management, strategic planning, implementation, project support, and business development for the Department of Homeland Security, Department of State, and Department of the Army. Geraldine earned her B.A. in Sociology from the University of Virginia. She was born and raised outside Washington, DC in the Northern Virginia area.



#### **AMANDA MISITI**

Amanda is the Program and Policy Research Manager at the Arnhold Institute for Global Health. She leads the Global Advantage project, as well as the Institute's policy work. She previously worked for BRAC Social Innovation Lab as a Knowledge Management and Communications Officer where she led a mobile money innovation fund supported by the Bill and Melinda Gates Foundation, and a learning initiative focused on scaling social initiatives in South Asia funded by the Rockefeller Foundation. Prior to BRAC, Amanda was a Program Officer at the U.S. Department of Health and Human Services with the Beacon Community Program. She served as a Health Education Specialist at the U.S. Peace Corps in Mali. Amanda holds a joint Executive Masters in Global Public Policy and Management from New York University and University College London, and graduated from McGill University with a Bachelors in International Development with minors in Economics and Political Science. She is originally from Medina, New York.



**SASHA WALEK**

Sasha Walek is responsible for leading the internal and external communications strategies for the Arnhold Institute for Global Health. She oversees all public communications activities including media relations, digital and print platforms, public events, advocacy communications, and marketing initiatives.

Prior to joining the Institute, Sasha worked in the public affairs office for the Mount Sinai Health System as an Associate Director of Media and Public Relations.

Originally from Toronto, Sasha's interest in health care and health policy developed throughout the decade she worked as a TV news producer for CNN, CNN International, Bloomberg TV, CNBC, and MSNBC. As a journalist, she covered politics, international affairs, natural disasters such as the Tsunami of 2004 and Hurricane Katrina, global health and pandemics, and the ongoing debate over health care reform in the United States. Sasha is committed to volunteer work in suicide prevention and mental health advocacy.