

# IRB Monthly Dashboard: 12/1/2024 – 12/31/2024

| Average Monthly Turnaround Time (TAT) for Submissions Requiring Approval (Calendar Days) |                |            |     |                    |            |     |               |            |     |
|--|----------------|------------|-----|--------------------|------------|-----|---------------|------------|-----|
|  | Initial Review |            |     | Continuing Review* |            |     | Modifications |            |     |
|  | TAT            | Last Month | YTD | TAT                | Last Month | YTD | TAT           | Last Month | YTD |
| <b>Full Board (Mean)</b>   | 77↑            | 60         | 77  | 35↓                | 44         | 40  | 55↑           | 49         | 46  |
| <b>Full Board (Median)</b>   | 73↑            | 50         | 59  | 34↓                | 41         | 35  | 44            | 45         | 36  |
| <b>Expedited (Mean)</b>  | 75↓            | 80         | 73  | 29                 | 29         | 30  | 22↑           | 16         | 15  |
| <b>Expedited (Median)</b>  | 62↓            | 65         | 62  | 21                 | 19         | 22  | 13↑           | 8          | 7   |

| Total #Submissions in Month by Submission Type |            |                    |            |               |            |            |            |                         |            |                   |      |
|--|------------|--------------------|------------|---------------|------------|------------|------------|-------------------------|------------|-------------------|------|
| Initial  |            | Continuing Review* |            | Modifications |            | RNI        |            | Total (Including RNIs): |            |                   |      |
| This Month                                     | Last Month | This Month         | Last Month | This Month    | Last Month | This Month | Last Month | This Month              | Last Month | This Month (2023) | YTD  |
| 98   | 98         | 220                | 196        | 269           | 469        | 56         | 69         | 643                     | 832        | 614               | 9718 |

| INITIAL (R2R) EXTERNAL IRB METRICS |            |   |                          |                   |  |                          |
|------------------------------------|------------|---|--------------------------|-------------------|--|--------------------------|
| # Submissions                      |            | Average TAT from Submission to Reliance Confirmed (Calendar Days) |                          |                   | Average TAT from Submission to FDLS^ (Calendar Days) |                          |
| This Month                         | Last Month | This Month (Mean/Median)  | Last Month (Mean/Median) | YTD (Mean/Median) | This Month (Mean/Median)                             | Last Month (Mean/Median) |
| 20                                 | 33         | 46↑/39  | 43/35                    | 41/34             | 105↑/93↑   | 88/85                    |

Green # (↓) = TAT decreased >2 days from last month

Red # (↑) = TAT increased >2 or more days from last month

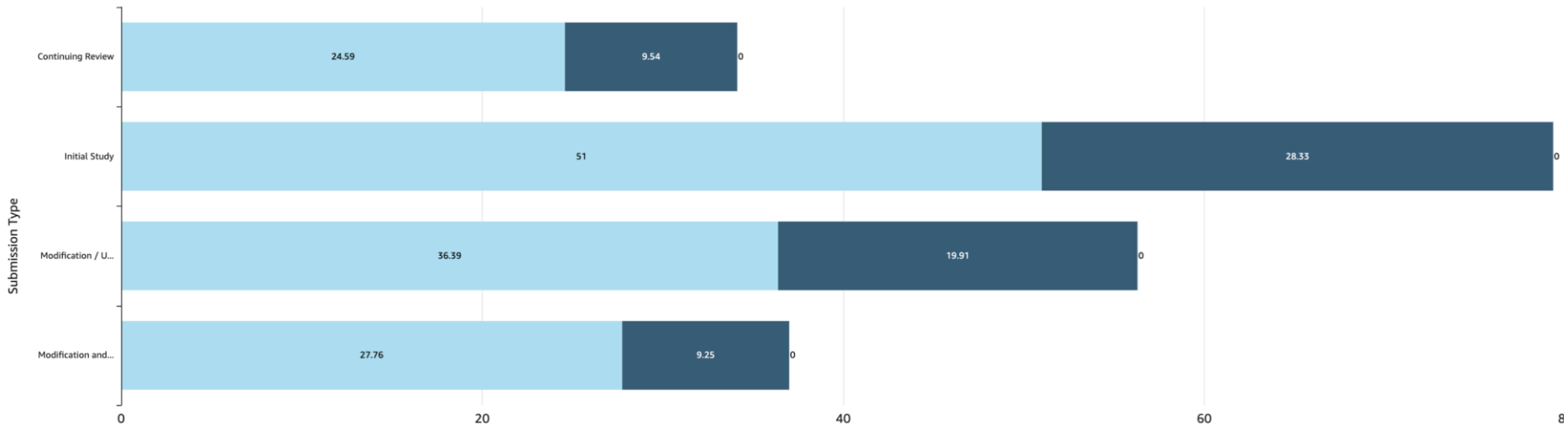
Black # = TAT unchanged or less than 2 days changed from last month

\*"Modification and Continuing Review" combination submissions are counted towards the Continuing Review Turnaround Time and #Submissions

^Final Determination Letter Sent

# 12/1/2024 – 12/31/2024

## Full Board: Average Time Spent With PPHS vs. Outside PPHS



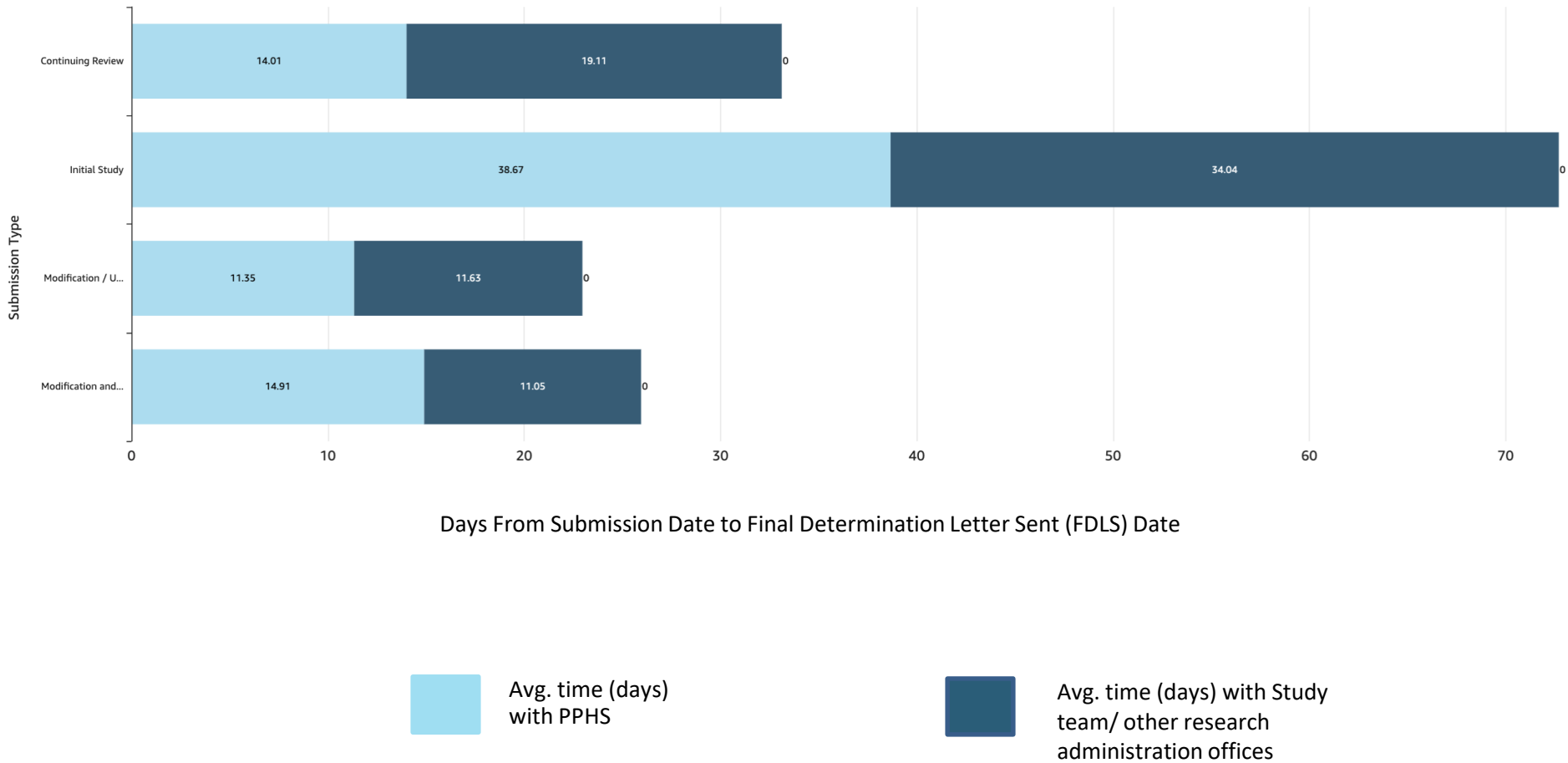
Days From Submission Date to Final Determination Letter Sent (FDLS) Date

Avg. time (days) with PPHS incl. Pre-review and Committee Review

Avg. time (days) with Study team/ other research administration offices

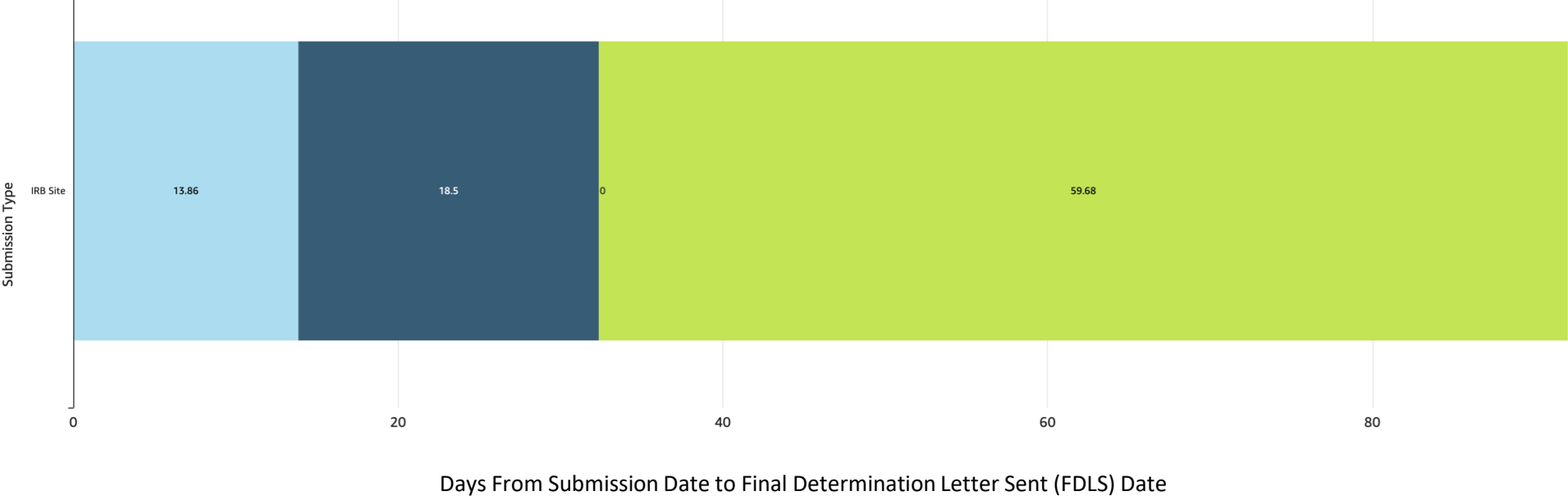
# 12/1/2024 – 12/31/2024

## Expedited: Average Time Spent With PPHS vs. Outside PPHS



# 12/1/2024 – 12/31/2024

## R2R: Average Time Spent With PPHS vs. Outside PPHS vs. External IRB



Avg. time (days) with PPHS

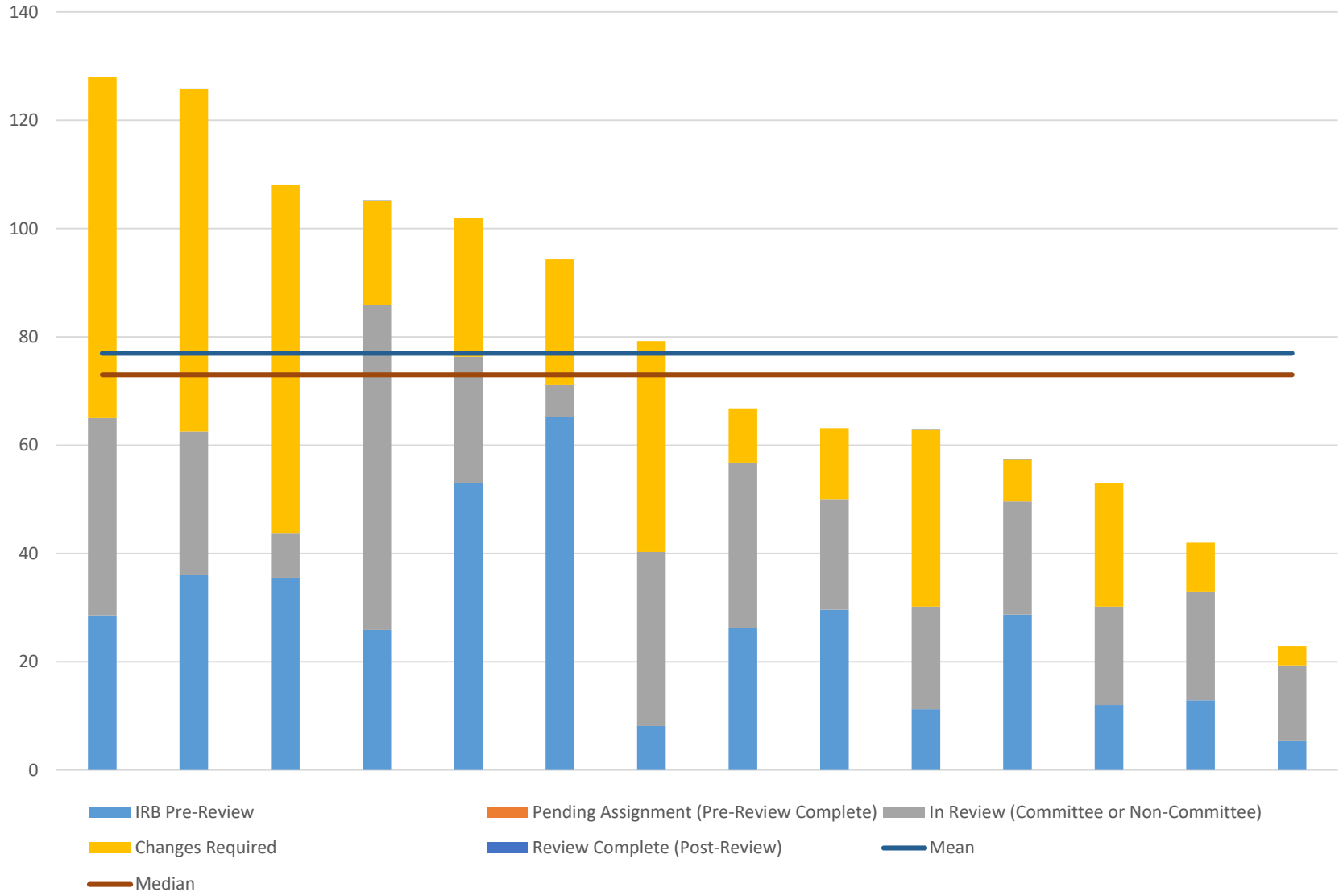


Avg. time (days) with Study team/ other research administration offices



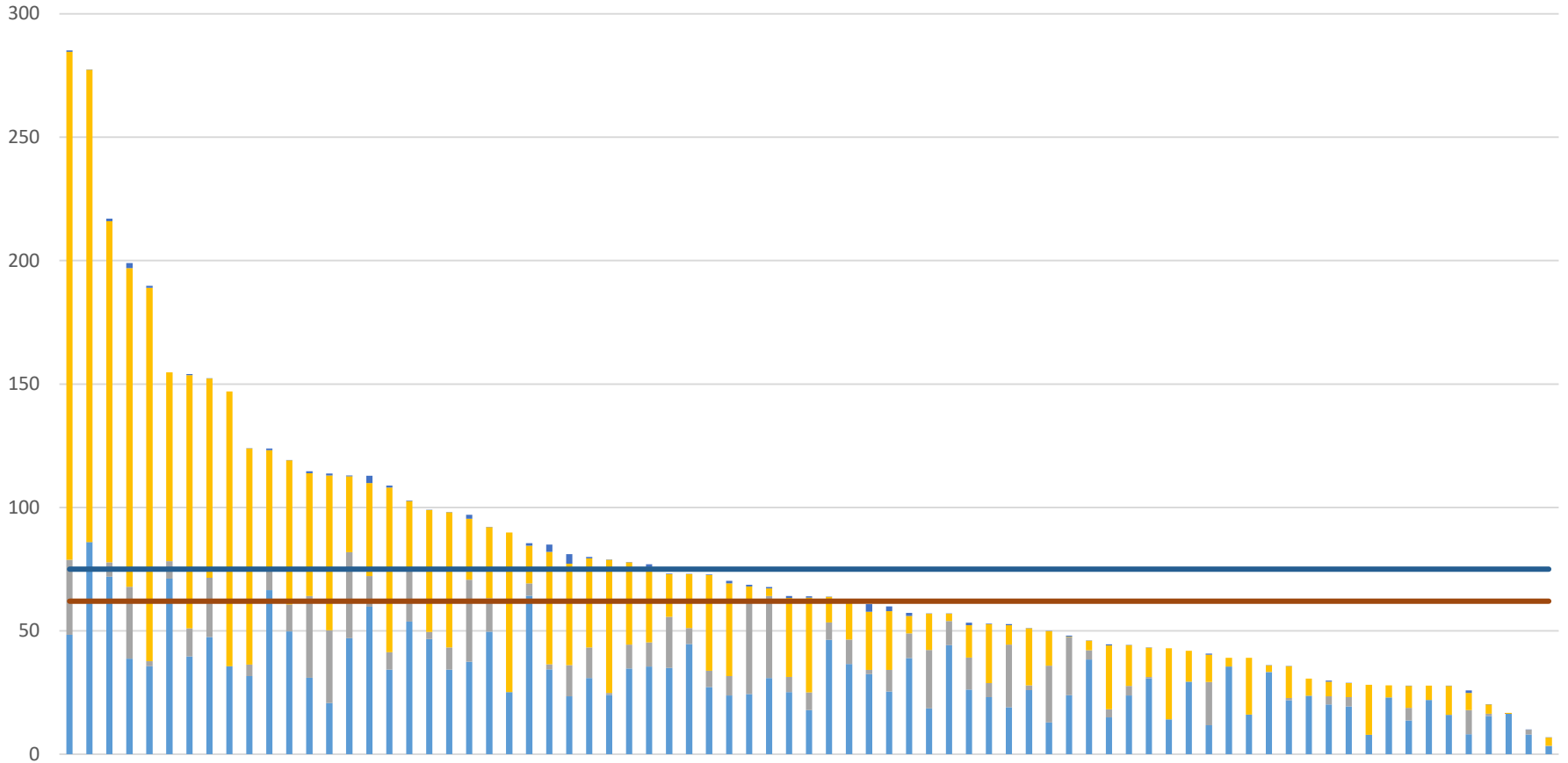
Avg. time (days) with External IRB

# December 2024 Full Board Initial Review



***\*\*If the top 2 outliers are removed, the TAT reduces from 77 to 68.\*\****

# December 2024 Expedited Initial Review



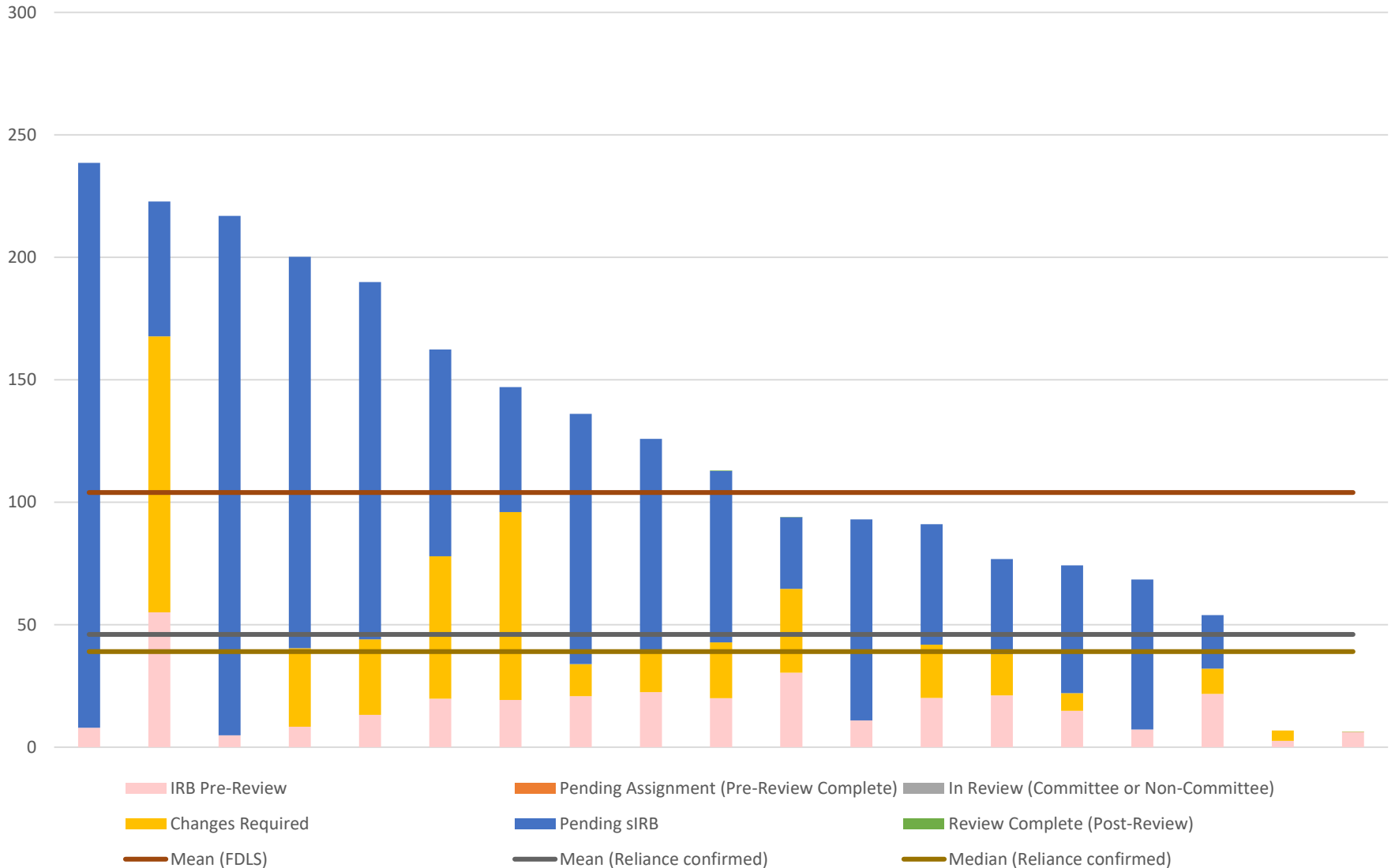
IRB Pre-Review  
Changes Required  
Median

Pending Assignment (Pre-Review Complete)  
Review Complete (Post-Review)  
Mean

In Review (Committee or Non-Committee)

**\*\* With the top 3 outliers removed, the TAT reduces from 75 to 67. \*\***

## December 2024 Reliance Initial Review



**\*\* If the top 2 outliers are removed, the TAT reduces from 105 to 91. \*\***