

**COMMUNITY OUTREACH AND ENGAGEMENT
NEWSLETTER ISSUE I**

A Welcome from our Associate Director

Welcome to the first issue of the COE Newsletter! We are excited to share updates, events and ways we are amplifying the community voice!

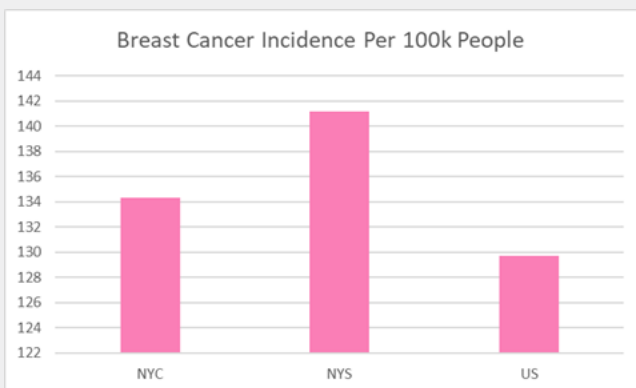


Cardinale B. Smith, MD, PhD

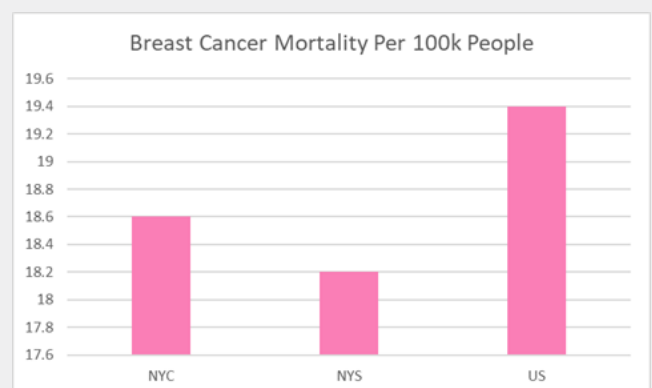
Our mission is to work with members of our community to address cancer disparities and reduce hardships of cancer for patients, families, caregiver and communities across the five boroughs of NYC throughout every stage of cancer care (risk reduction, screening, diagnosis, treatment, survivorship and end of life care).

Our vision is to identify the needs that members of the community say are important, communicate those needs to cancer research leaders and programs, and help leaders and programs address these needs across NYC through engaging with the community, research and outreach efforts.

Excluding skin cancers, breast cancer is the most common cancer for women in the United States.



Breast cancer incidence in New York City is greater than incidence observed for the United States



Breast cancer mortality in New York City is greater than mortality observed for New York State.

Below is a chart of the top 3 neighborhoods in each NYC borough with the highest breast cancer mortality.

Bronx	Brooklyn	Manhattan	Queens	Staten Island
1. Concourse, Highbridge & Mount Eden	1. East Flatbush, Farragut & Rugby	1. Central Harlem	1. Far Rockaway, Breezy Point & Broad Channel	1. Port Richmond, Stapleton & Mariner's Harbor
2. Riverdale, Fieldston & Kingsbridge	2. East New York & Starrett City	2. East Harlem	2. Astoria & Long Island City	2. New Springville & South Beach
3. Belmont Crotona Park East & East Tremont	3. Bedford-Stuyvesant	3. Chelsea, Clinton & Midtown Business District	3. Briarwood, Fresh Meadows & Hillcrest	3. Tottenville, Great Kills & Annadale

Community Spotlight - The Brooklyn College Cancer Center

The Brooklyn College Cancer Center (CommUnity Outreach, Research and Education) BCCC-CuRE is a center established in 2020 at Brooklyn College of the City University of New York. The mission of the center is to enhance the lives of patients affected by cancer with a special focus on Brooklyn residents, including community outreach and education, with local partners.



The Brooklyn College Cancer Center Team

Through this center, Brooklyn College seeks to expand its fundamental research on cancer and combine research forces with local NYC cancer treatment centers and hospitals and Brooklyn communities, while delivering first-class educational opportunities to our undergraduate and graduate students.

BCCC-CuRE is happy to partner with the COE to create a Lay Health Navigator Program at Brooklyn College. This program will train undergraduate students to guide community members who attend our Health Educator programs into screening. Lay Health Navigators reach out to community members to improve access to cancer screenings and care, especially among underserved communities across NYC.

On October 28th, Brooklyn College Cancer Center and Maimonides Medical Center will host the Second Brooklyn Breast and Women's Cancer Symposium, a day-long in-person event at Brooklyn College, with participation of SUNY Downstate Health Sciences University, Memorial Sloan Kettering Cancer Center, and The Tisch Cancer Institute at Mount Sinai.

The event will include hybrid scientific/clinical talks by breast cancer researchers and medical practitioners (9:00AM-1:30PM), a community outreach event open to the Brooklyn community via zoom (2:30-3:15PM), and a Student Opportunities Session for Brooklyn College Students. The day will finalize with a poster session and a cocktail hour 5-7PM.

Location: Brooklyn College Library, Tanger Auditorium
Any visitor needs a pass into the Brooklyn College campus. If you are interested please email BCCC-CURE@brooklyn.cuny.edu.
Virtual Session Registration : [Zoom Link](#)

Increasing African-Immigrants Breast Cancer Screening

African immigrant women are at significant risk of low rates of breast cancer screening potentially leading to increased late-stage diagnoses and mortality.



For this project, the study-team, led by Dr. Jamilia Sly, is collaborating with African Services Committee and other community-based organizations in NYC to engage interested

women in participating to assess a novel educational program, developed through adaptation of the Witness Project, on breast cancer screening. The educational sessions will be offered in both English and French. Participants must be English or French speaking women, born in an African country, and 39 years or older. The time commitment is about 1.5 hours. Participants will be compensated for their time and effort with a gift card.

Women who are interested in the program can reach out for more information to Francesca Minardi, Clinical Research Coordinator, at 212-824-7807 or francesca.minardi@mssm.edu.



UPCOMING EVENTS

The Cedar Club: Chinese-speaking Cancer Patients Support Group. Workshop by Steven Cai, MD

- Date and Time: Wednesday, Oct 26th; 3 - 4 pm
- Location: [Zoom](#)
- This workshop will be given in Cantonese. For more information, please contact Emma Mi Zhou, LCSW at 212-604-6095 or mi.zhou@mountsinai.org

Online Cooking Class with Unite for HER in Recognition of Breast Cancer Awareness Month

- Date and Time: Thursday, Oct 27th; 1 - 2 pm
- Location: Zoom (link will be provided when you RSVP)
- RSVP: Please contact Emily Szafara, LMSW at 212-367-0106 or emily.szafara@mountsinai.org

RESEARCH

An important part of our work as the COE is to open the door for research bidirectionality. We will develop an infrastructure to make sure our communities are aware of research and that new research is responsive to community needs. Two key components to facilitating this bidirectionality are our Program Liaisons, who act as the bridge between their respective research programs and the COE, and Community Scientists, who are community members trained to engage with researchers.

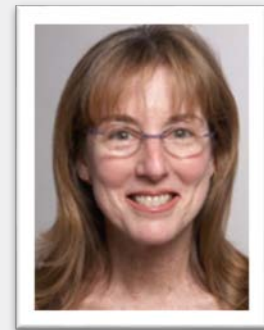
Our COE Program Liaisons



Nihal Mohamed
Cancer
Prevention and
Control



Samir Parekh
Cancer Clinical
Investigation



Janice Gabilove
Education



Emily Gallagher
Cancer
Mechanisms



Robert Samstein
Cancer
Immunology



Therica Miller
Clinical Trials



Karyn Goodman
Clinical Trials

Community Scientists

The Institute of Medicine deems the inclusion of patients and other community stakeholders in the research process as a necessary step to advance translational science. Community Scientists are trained in healthcare research to help amplify the voices of their communities. They have proven valuable in increasing communities' knowledge and awareness of research, building trust in scientific research, and informing areas of research design and ethics. The TCI Community Scientists program was developed by Dr. Melissa Mazor in 2022. Interested researchers and community members are welcome to join or inquire about our monthly Community Scientist workgroup to learn more or explore future community engagement and equity opportunities for your research programs.

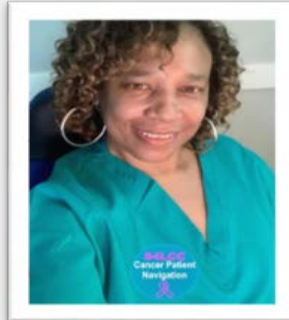
Featured Community-Engaged Research Project

ACCESS Study: A Community Care Model to Enhance Supportive Service to Women of Color

The ACCESS study is an example of a community-engaged study funded by the National Institutes of Health and Rita and Alex Hillman Foundation. For this project, Dr. Melissa Mazor is partnering with two community scientists, Ms. Dolores Morehead and Ms. Travis Thomas. The goal of ACCESS is to develop and evaluate a navigator delivered supportive care intervention to improve access to psychological, physical, social, and spiritual care and improve quality of life for women of color with advanced breast cancer. Importantly, ACCESS is being developed in collaboration with the community over several phases. We are recruiting for the first phase of ACCESS, which includes a 1–2-hour phone or zoom interview with patients and care partners. This interview will be important to make sure ACCESS is developed in consideration of diverse patient and community needs. Please contact Dr. Melissa Mazor for information about the research at melissa.mazor@mountsinai.org.



Melissa Mazor
ACCESS
Principal Investigator



Travis Thomas
ACCESS
Community Scientist



Dolores Moorehead
ACCESS
Community Scientist

Clinical Trials

Equitable access to clinical trials is important to make sure that cancer care addresses the needs of diverse populations. At The Tisch Cancer Institute (TCI), we aim to provide ongoing information and resources about clinical trials. Additionally, one of the primary aims of COE is to partner with the community and researchers to improve access to both information and participation about clinical trials. Currently, there are 840 open clinical trials at TCI. These trials include all types of research, from basic science, translational research (bench to bedside), and clinical trials focused on treatment and quality of life.

This newsletter will spotlight key trials as highlight resources for further information.

For more information on clinical trials at Mount Sinai visit: <https://www.mountsinai.org/clinical-trials> and the National Institutes of Health (<https://clinicaltrials.gov/>).

Please contact the COE at MountSinaiCOE@mountsinai.org if you need assistance in navigating information about clinical trials.



Mount Sinai Clinical Trials Website



Mount Sinai Clinical Trials for Breast Cancer



The Tisch Cancer Institute

COMMUNITY OUTREACH AND ENGAGEMENT PROGRAM

*One Gustave L. Levy Place
Box 1128
New York, NY 10029
212-659-5600
<https://icahn.mssm.edu/research/tisch/community>*

COE Leadership Team

[Cardinale B. Smith, MD, PhD](#)

Associate Director, Community Outreach and Engagement
Expertise: Health Equity, Palliative Care, Cancer Care Delivery, Physician
cardinale.smith@mssm.edu

[Lina Jandorf, MA](#)

Director, Cancer Community Outreach
Community Outreach, Cancer Prevention and Control, Clinical Research
lina.jandorf@mssm.edu

[Melissa Mazor, PhD, MS, RN](#)

Cancer Prevention and Control Fellow
Cancer Care Equity, Community-Engaged Research, Oncology Nurse
melissa.mazor@mountsinai.org

[Alison Snow, PhD, LCSW-R, OSW-C](#)

Director, Cancer Community Engagement
Supportive Care, Oncology Social Worker
alison.snow@mountsinai.org

[Asher Moreland, MPH](#)

Program Manager
ashley.moreland@mssm.edu

[Tatiana Ramirez, BA](#)

Research Assistant
tatiana.ramirez@mountsinai.org

[Mikhalya Brown, BA](#)

Lead Health Educator
mikhalya.brown@mssm.edu